







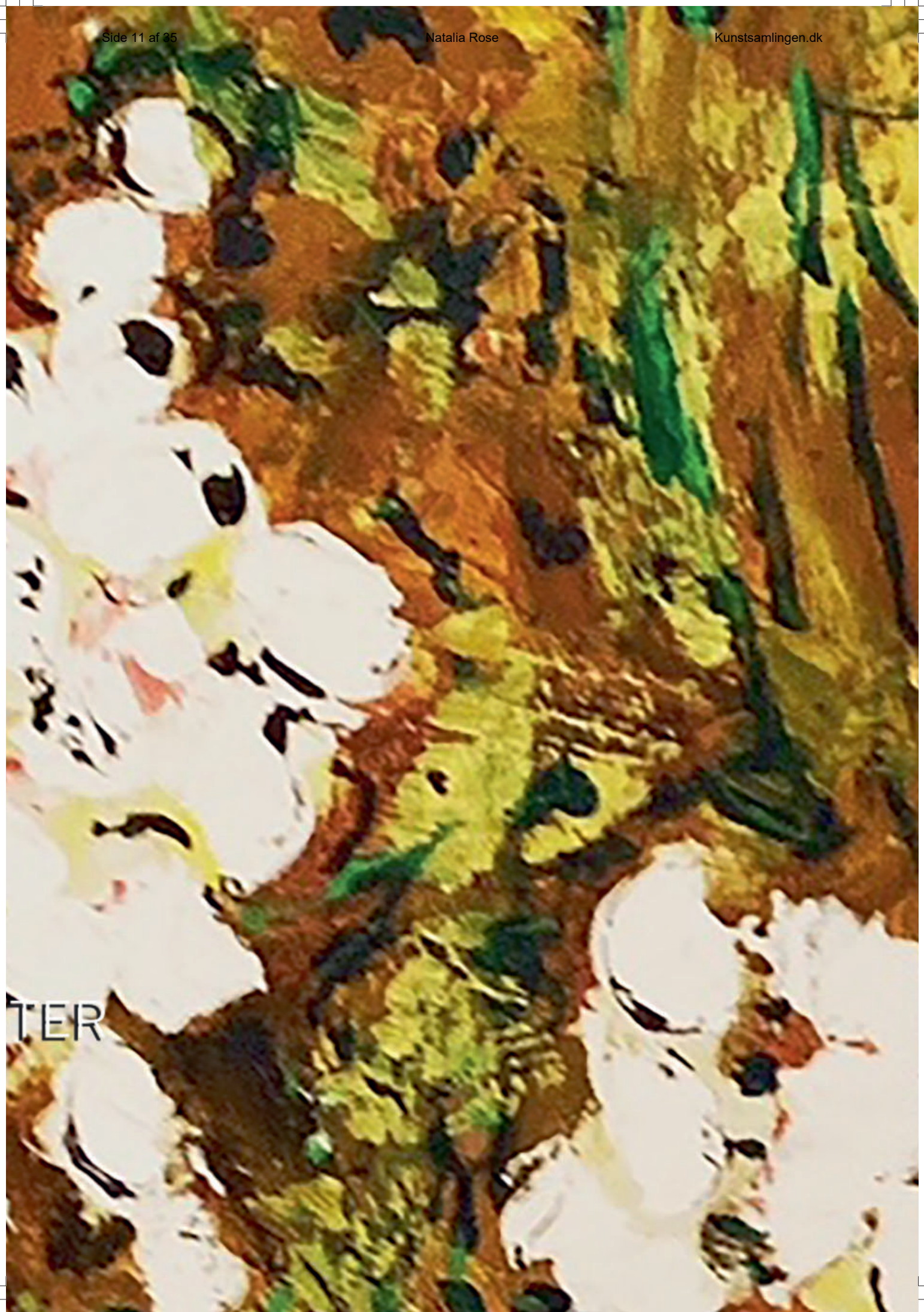




LOCKPOSTER

An abstract painting featuring thick, expressive brushstrokes. The color palette is dominated by warm tones: bright yellow, earthy brown, and dark green, set against a background of white. The strokes are layered and textured, creating a sense of depth and movement. The overall composition is dense and energetic.

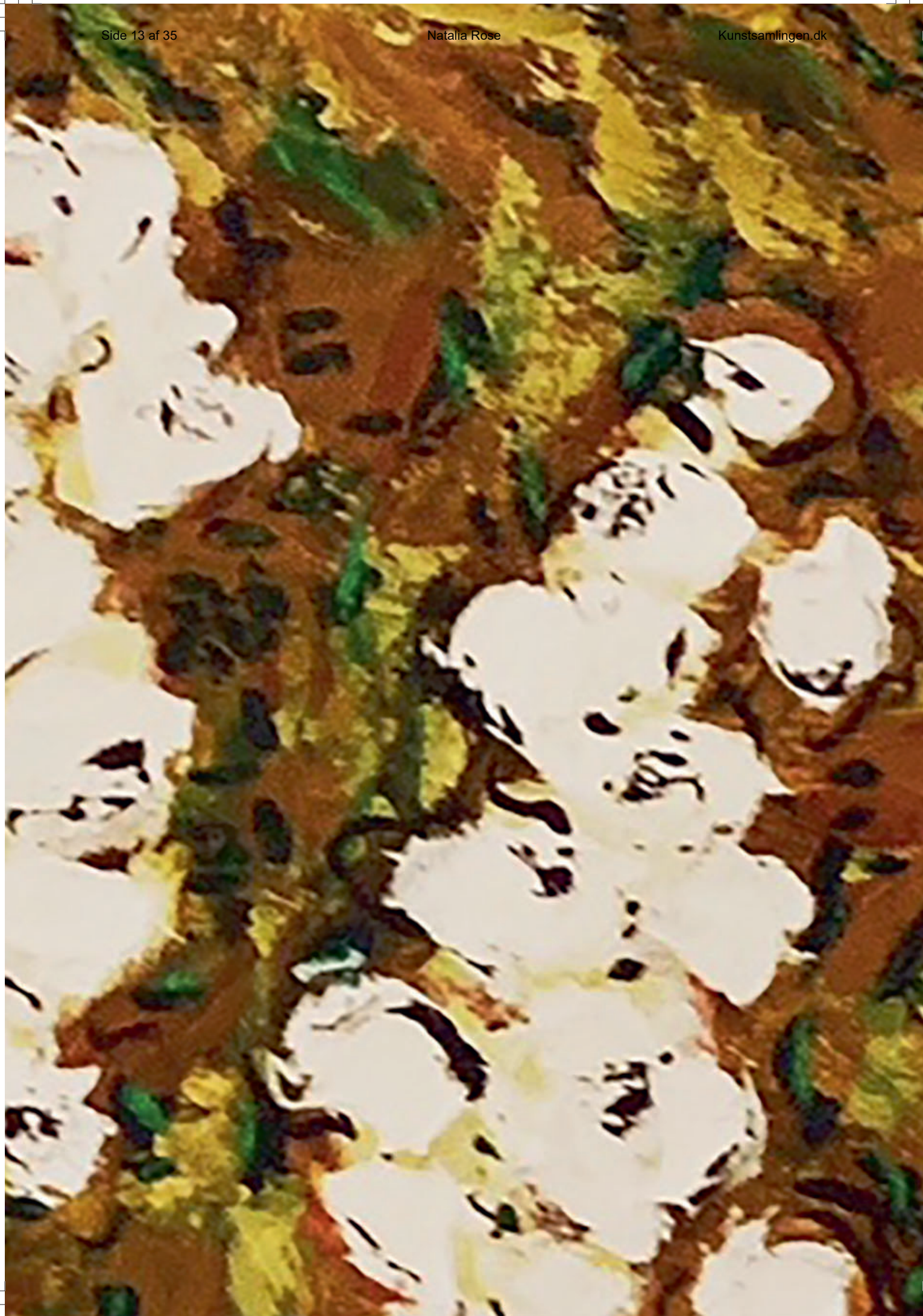
Ж BLOCKPOST



TER



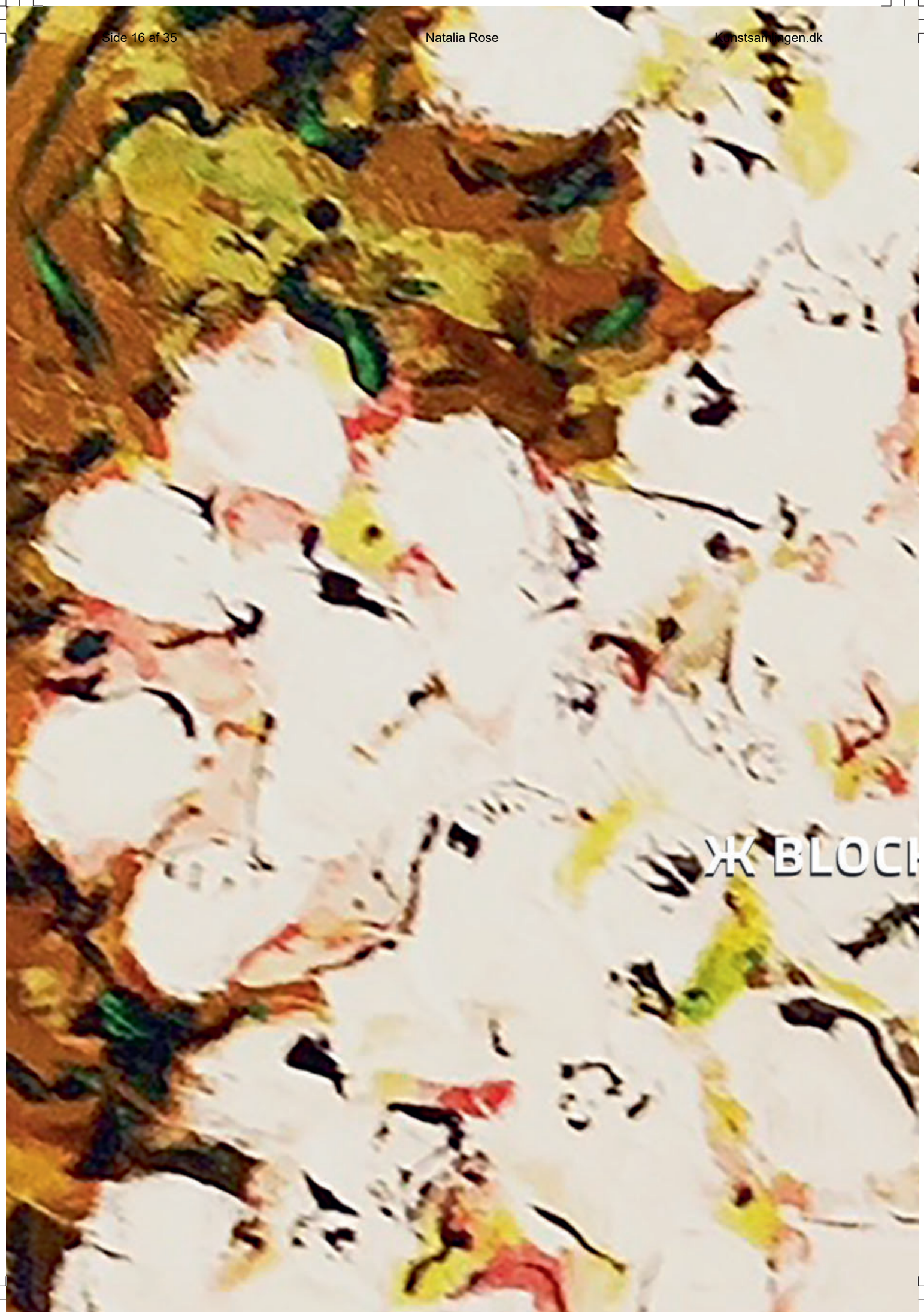
X BLOCKPOSTER





Ж BLOCKPOSTER





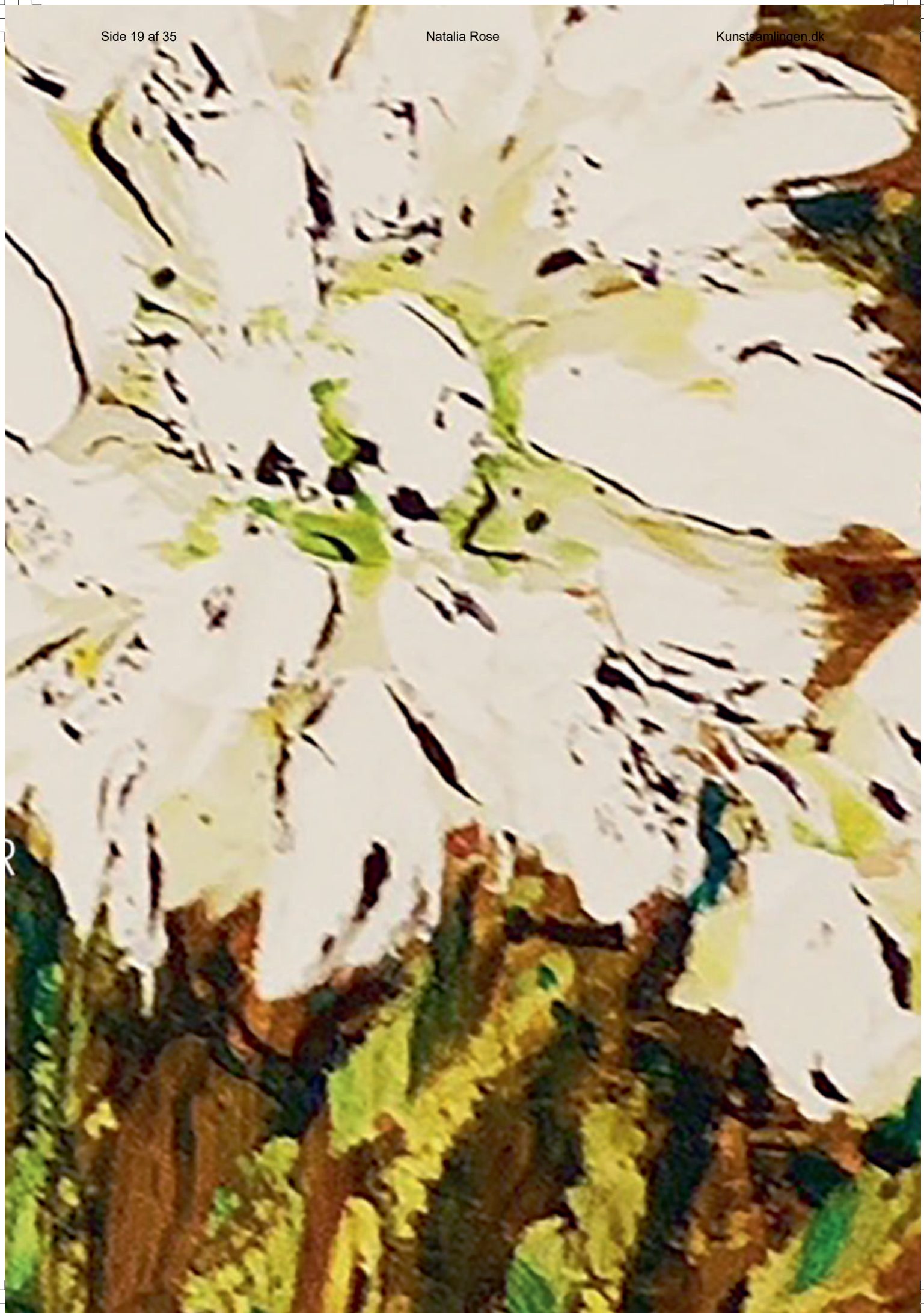
Ж BLOCI



IKPOSTER

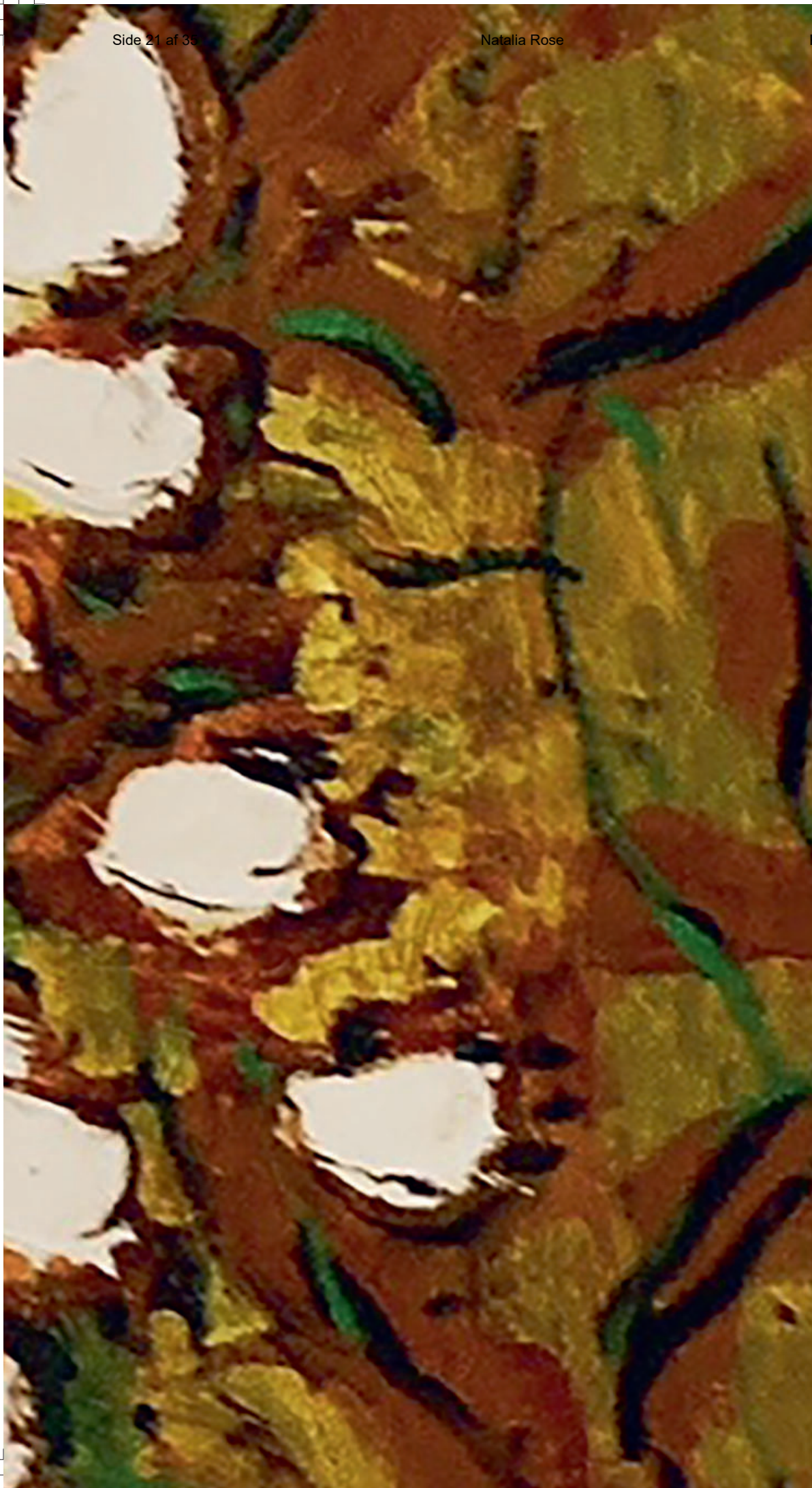
An abstract painting featuring a complex, layered composition. The background is a light, off-white or cream color. Overlaid on this are various organic, flowing shapes and textures in shades of yellow, brown, and green. Some areas appear darker, possibly due to shadows or the use of darker pigments like black or dark brown. The overall effect is one of depth and movement, with the colors blending and separating in a way that suggests a natural, perhaps geological or biological, process. The brushwork is visible, adding to the texture and sense of spontaneity.

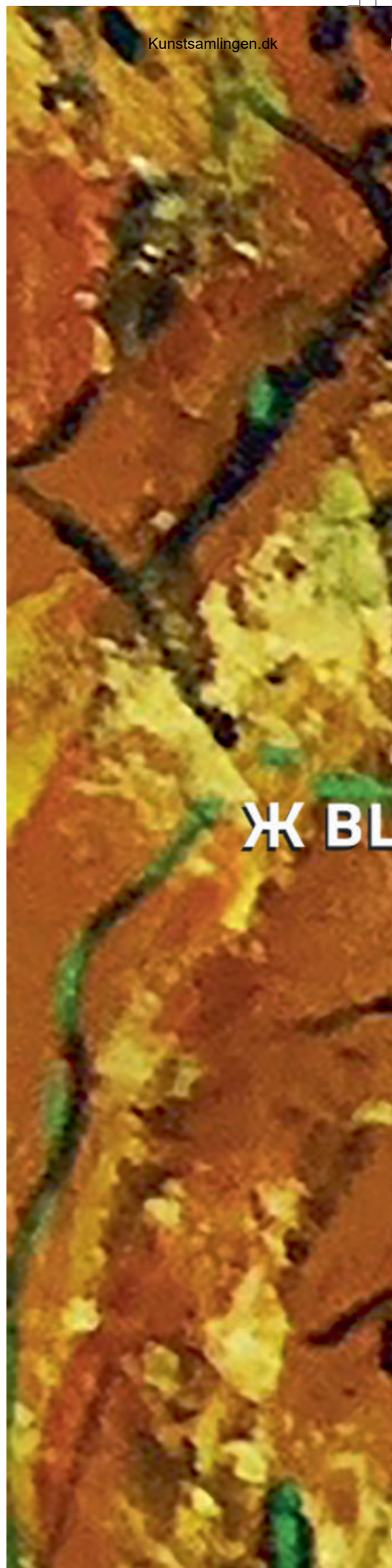
Ж BLOCKPOSTER



An abstract painting featuring a complex, layered composition of colors. The palette includes white, brown, yellow, green, and dark tones. The brushstrokes are visible, creating a textured and expressive surface. The overall effect is one of organic, flowing forms and rich, earthy tones.

Ж BLOCKPOSTER





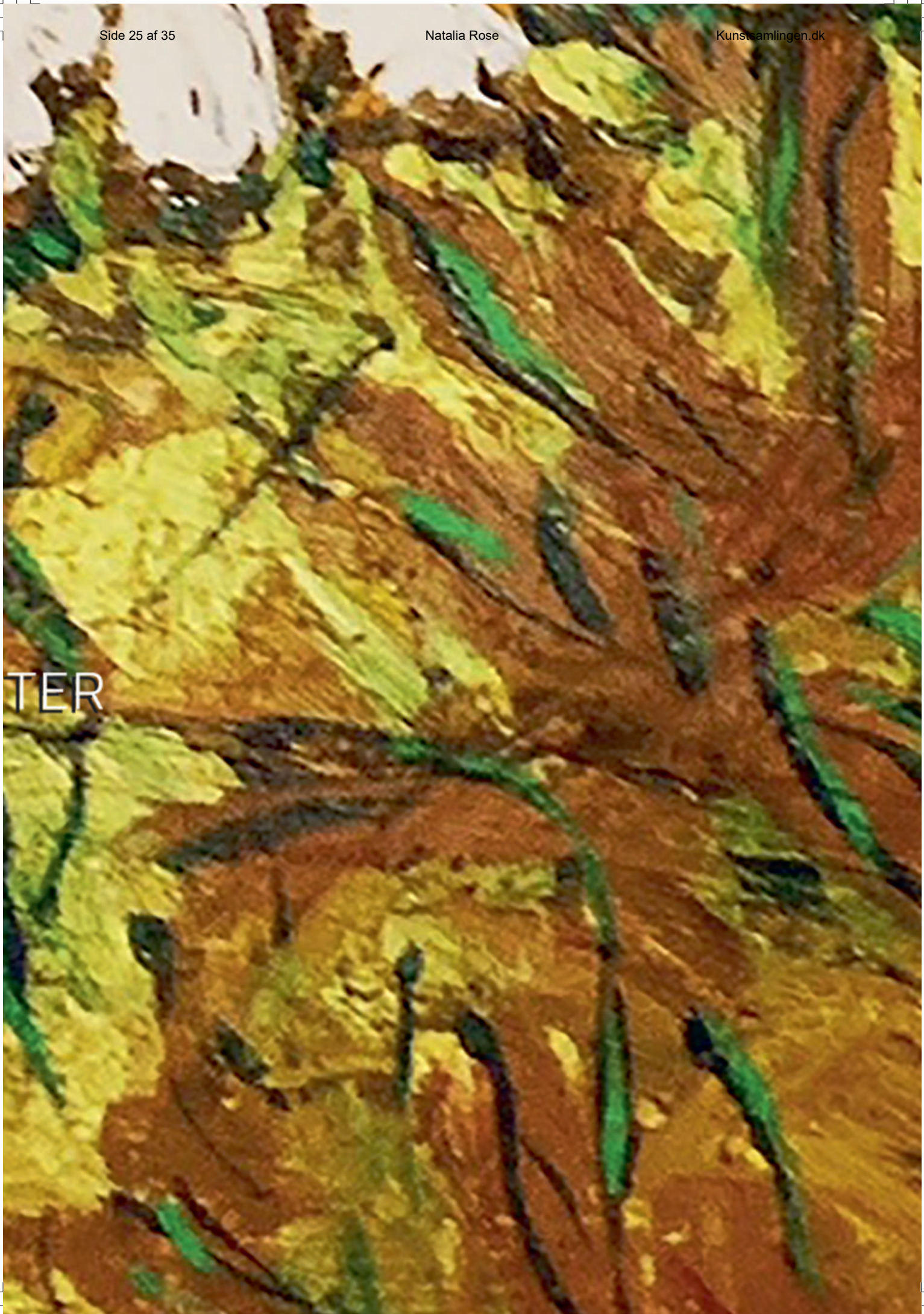


LOCKPOSTER

An abstract painting with a textured surface. The composition is dominated by warm tones of ochre, sienna, and terracotta, interspersed with vibrant, slightly muted green and yellow-green patches. The brushwork is visible, creating a sense of movement and depth. The overall effect is reminiscent of a natural, perhaps geological or organic, formation.

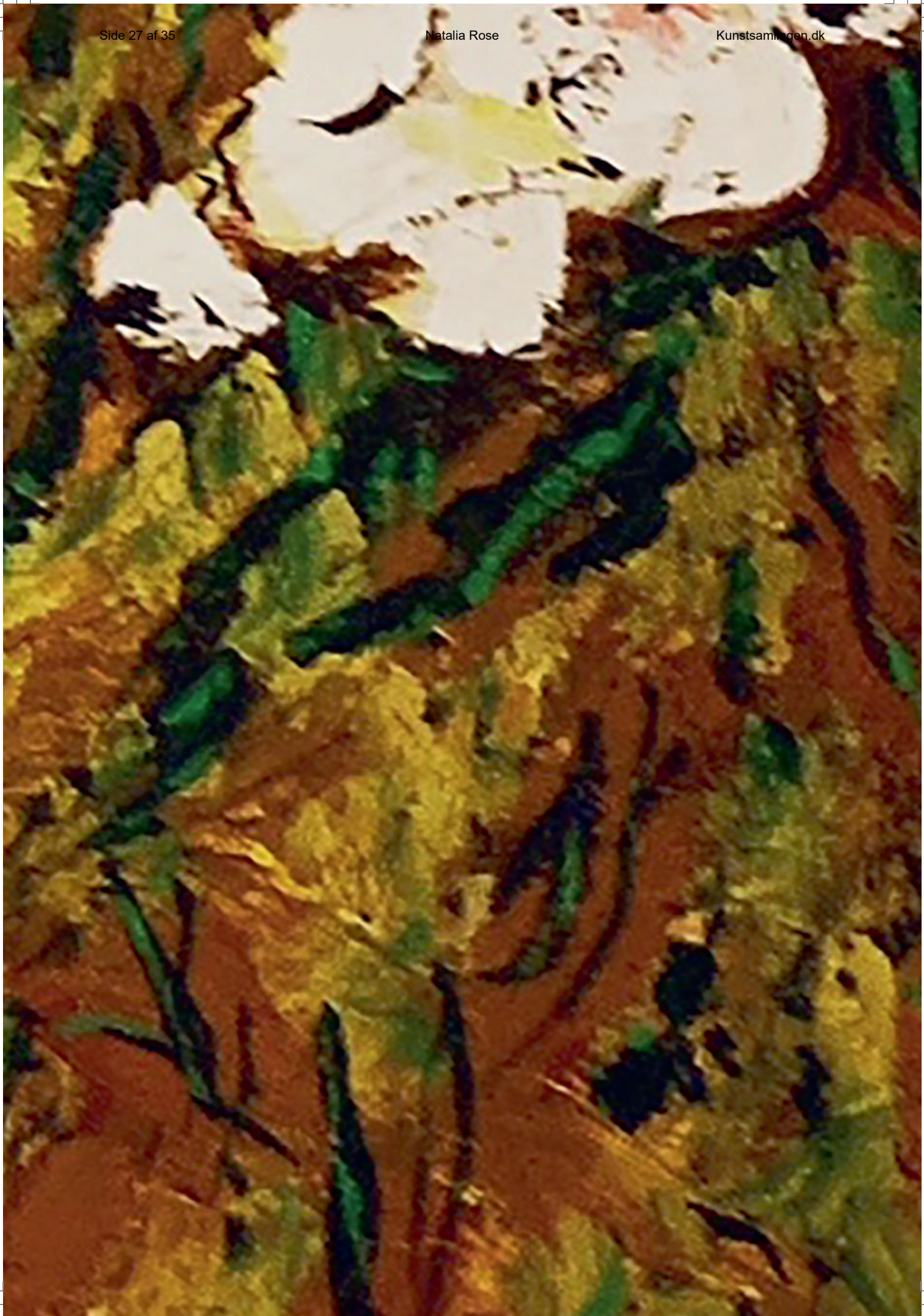
Ж BLOCKPOST

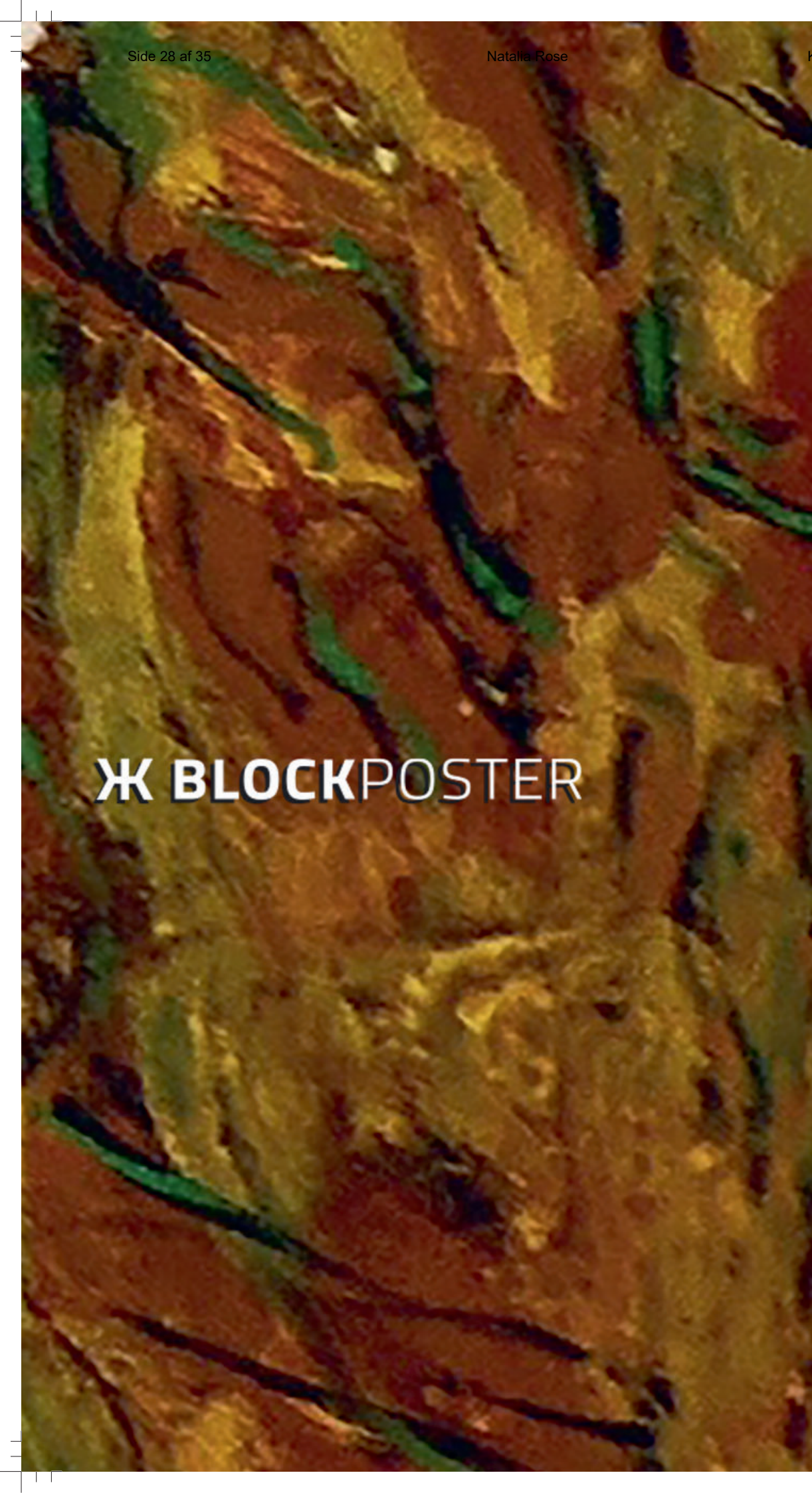
TER





Ж BLOCKPOSTER



An abstract painting featuring a complex, layered texture. The color palette is dominated by earthy tones: deep reds, ochre yellows, and forest greens. The brushwork is expressive and somewhat chaotic, creating a sense of movement and depth. The overall effect is reminiscent of a natural landscape or perhaps a microscopic view of a mineral surface.

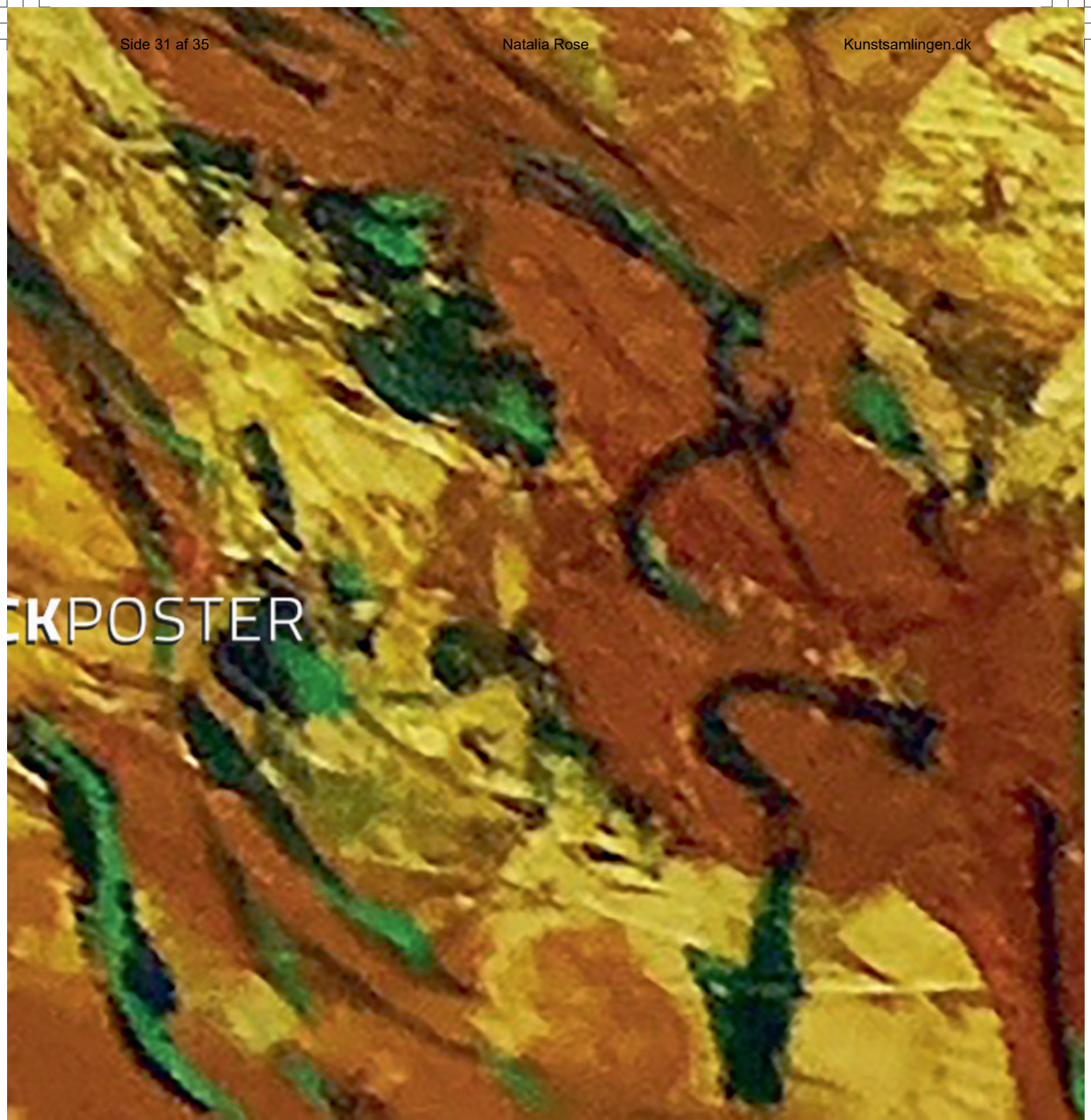
Ж BLOCKPOSTER





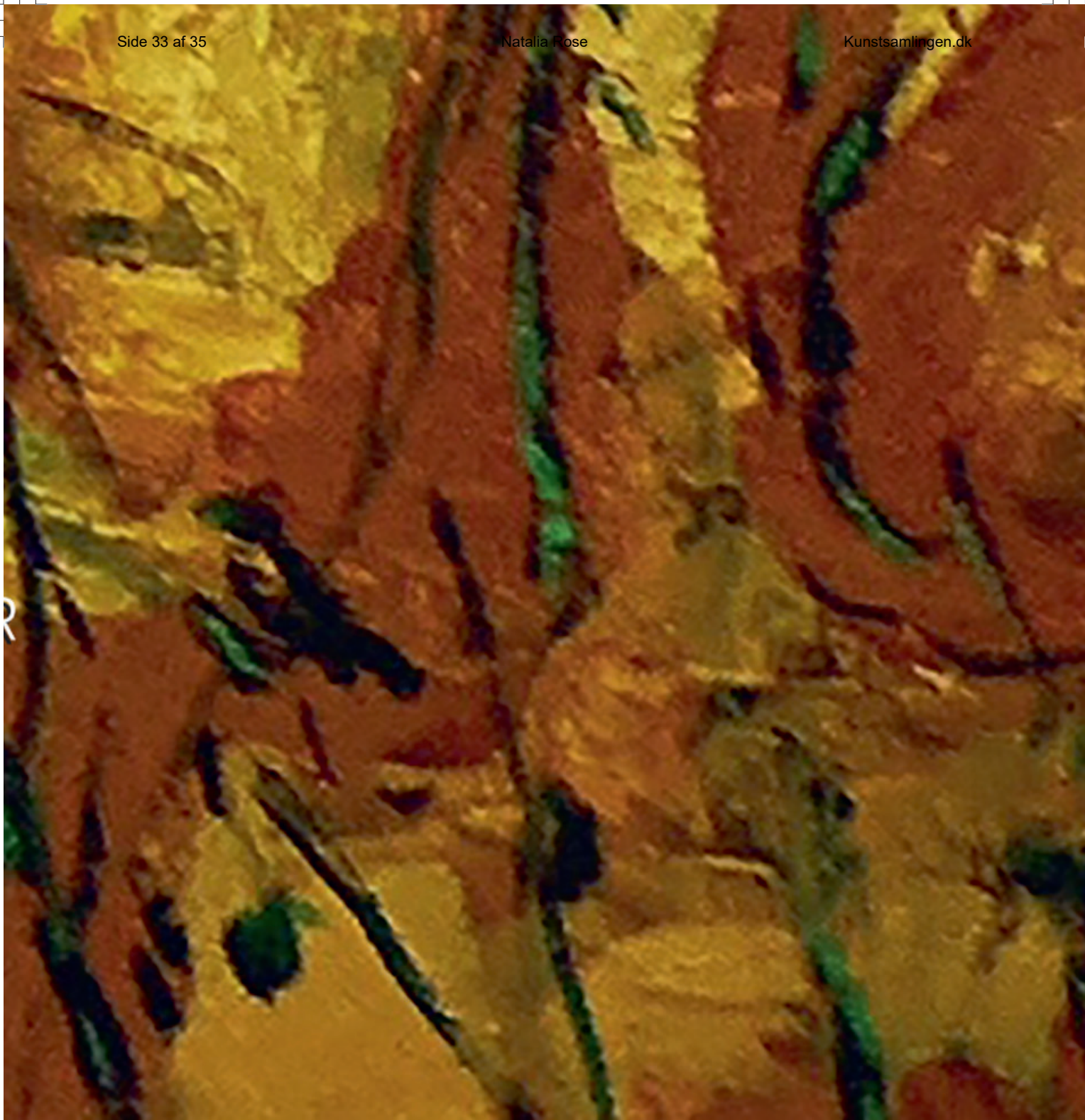
Ж BLOCH

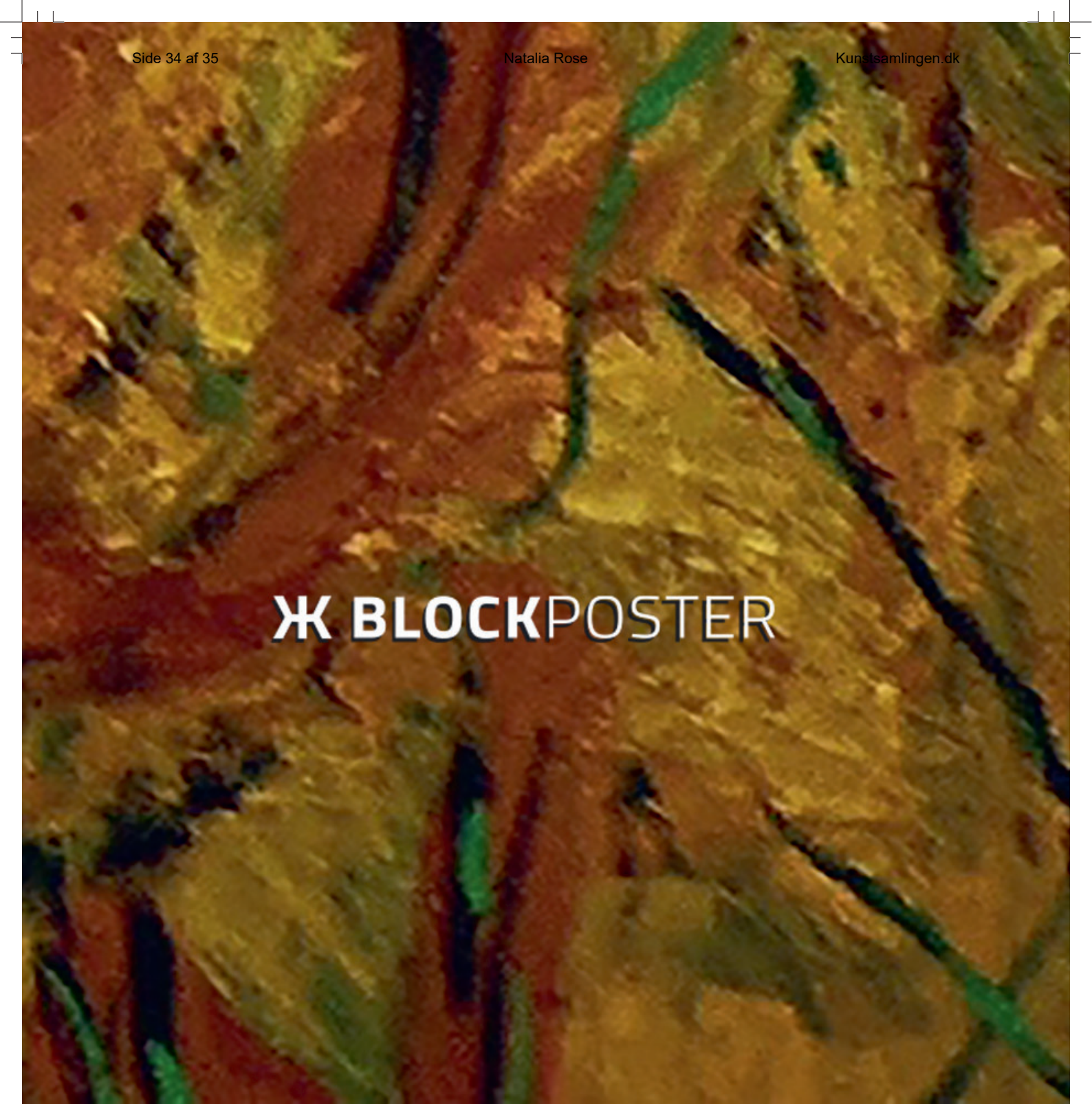
ERKPOSTER



An abstract painting featuring thick, textured brushstrokes. The color palette is dominated by warm tones: a rich, earthy brown serves as the background, with large, expressive strokes of bright yellow and vibrant green. Darker, almost black, lines and strokes are interspersed throughout, creating a sense of depth and movement. The overall effect is one of raw, gestural energy.

Ж BLOCKPOSTER



An abstract painting featuring a complex, organic pattern. The color palette is dominated by warm, earthy tones: deep reds, burnt oranges, and golden yellows. Interspersed throughout these warm areas are dark, almost black, veins and streaks that create a sense of movement and depth. The texture appears thick and layered, with visible brushstrokes and some darker, more saturated areas that suggest depth and shadow. The overall effect is one of dynamic energy and organic complexity.

Ж BLOCKPOSTER

